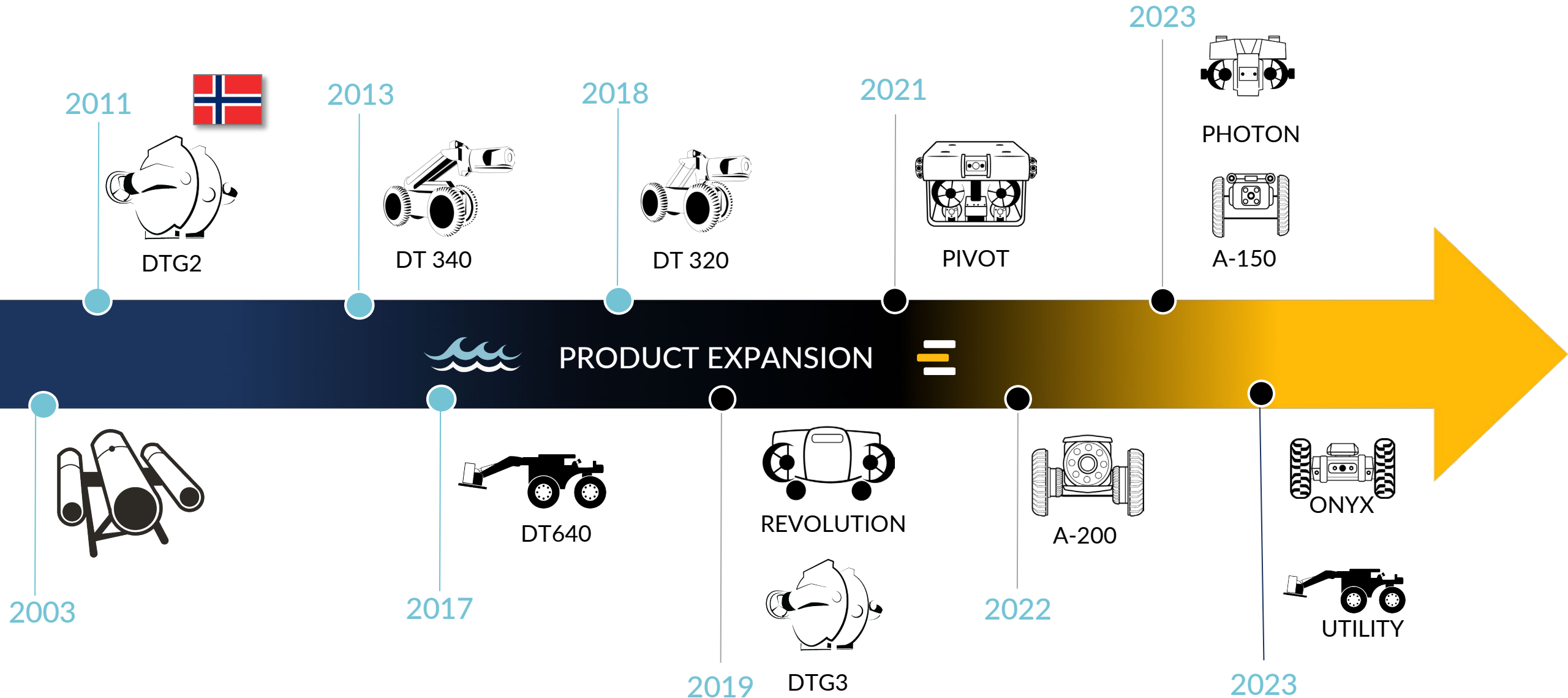




A background image of a nuclear power plant with two large cooling towers emitting steam, set against a blue sky with clouds. The image is overlaid with a dark blue gradient at the bottom.

DEEP TREKKER INNOVATIVE NUCLEAR SUBMERSIBLE ROBOTIC PLATFORMS

A BRIEF HISTORY OF INNOVATIVE ROBOTIC SOLUTIONS



Photon ROV

- Key Specs
- Weight = 10KG
- 4K UHD Camera
- 3 hour runtime



REVOLUTION



Powerful zoom cam and direct power for safer operation in reactors, spent fuel pools, torus, etc.

Specifications

SPEED
3.5 knots

DEPTH RATING
Up to 305 m (1000 ft)

CAMERA
4K, zoom cam available

CONTROLLER
7" LCD

POWER
Direct Power

WIDTH
440 mm (17.3")

HEIGHT
235 mm (9.3")

LENGTH
717 mm (28.2")

WEIGHT
75lb

BODY MATERIAL
Aluminum + stainless steel

TRANSPORT
Two wheeled Pelican cases




SAP 30050531

 **Westinghouse**
INSPECTION SERVICES

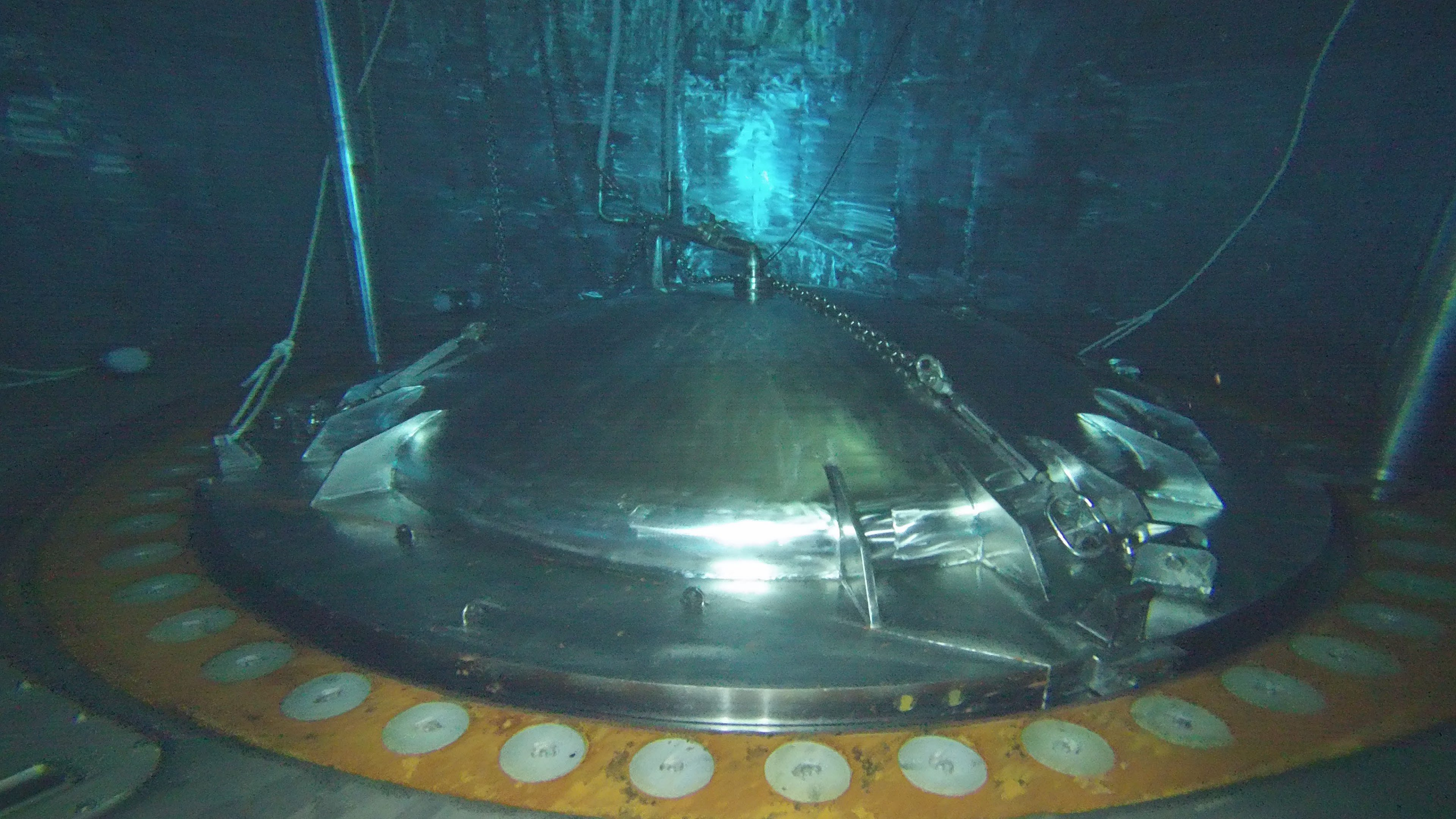
o u c a crac VT-1
o u c a crac
o u c a crac

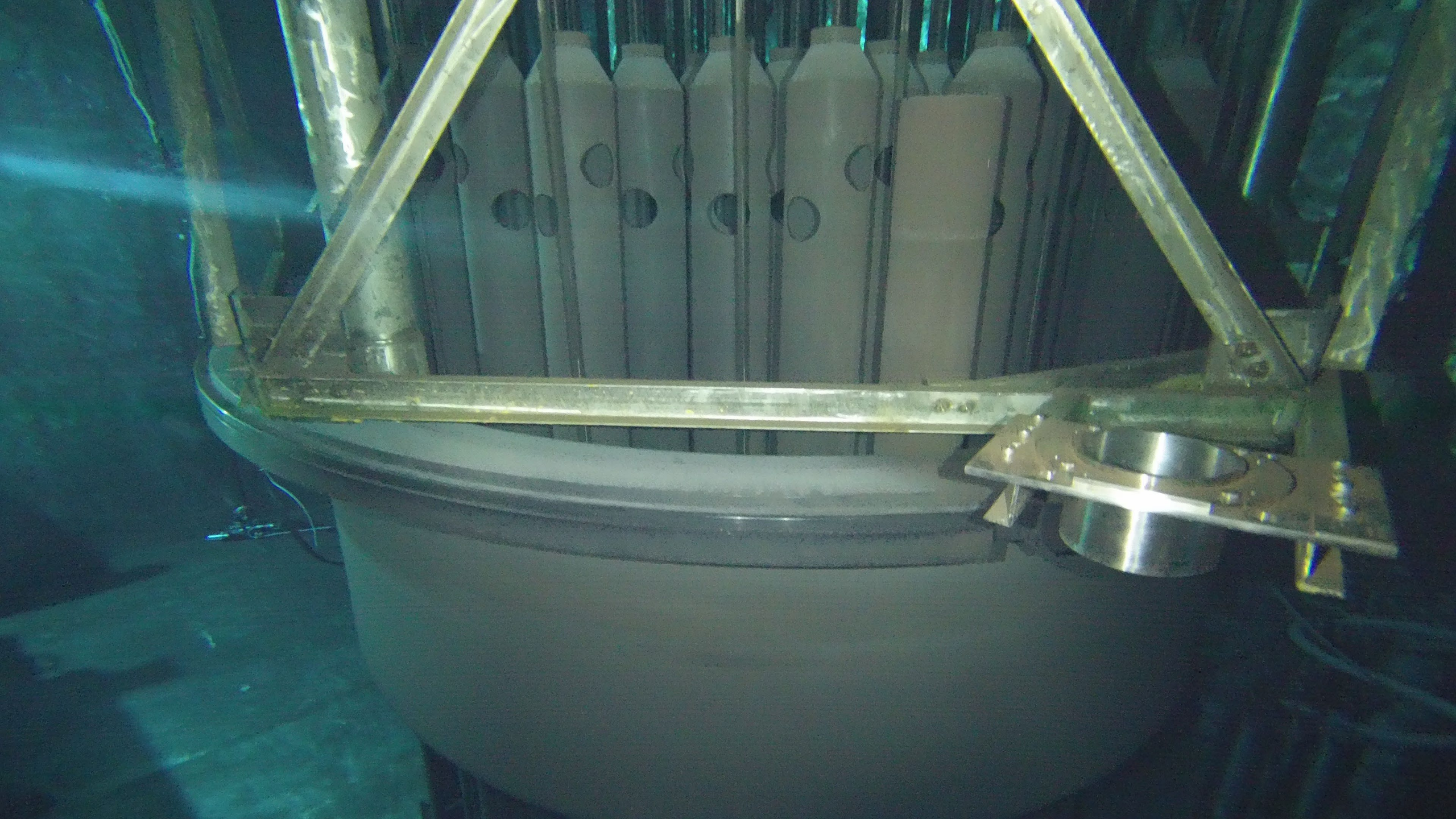
o u c a crac VT-2
o u c a crac

o u c a crac
o u c a crac
o u c a crac VT-3

 **Westinghouse**





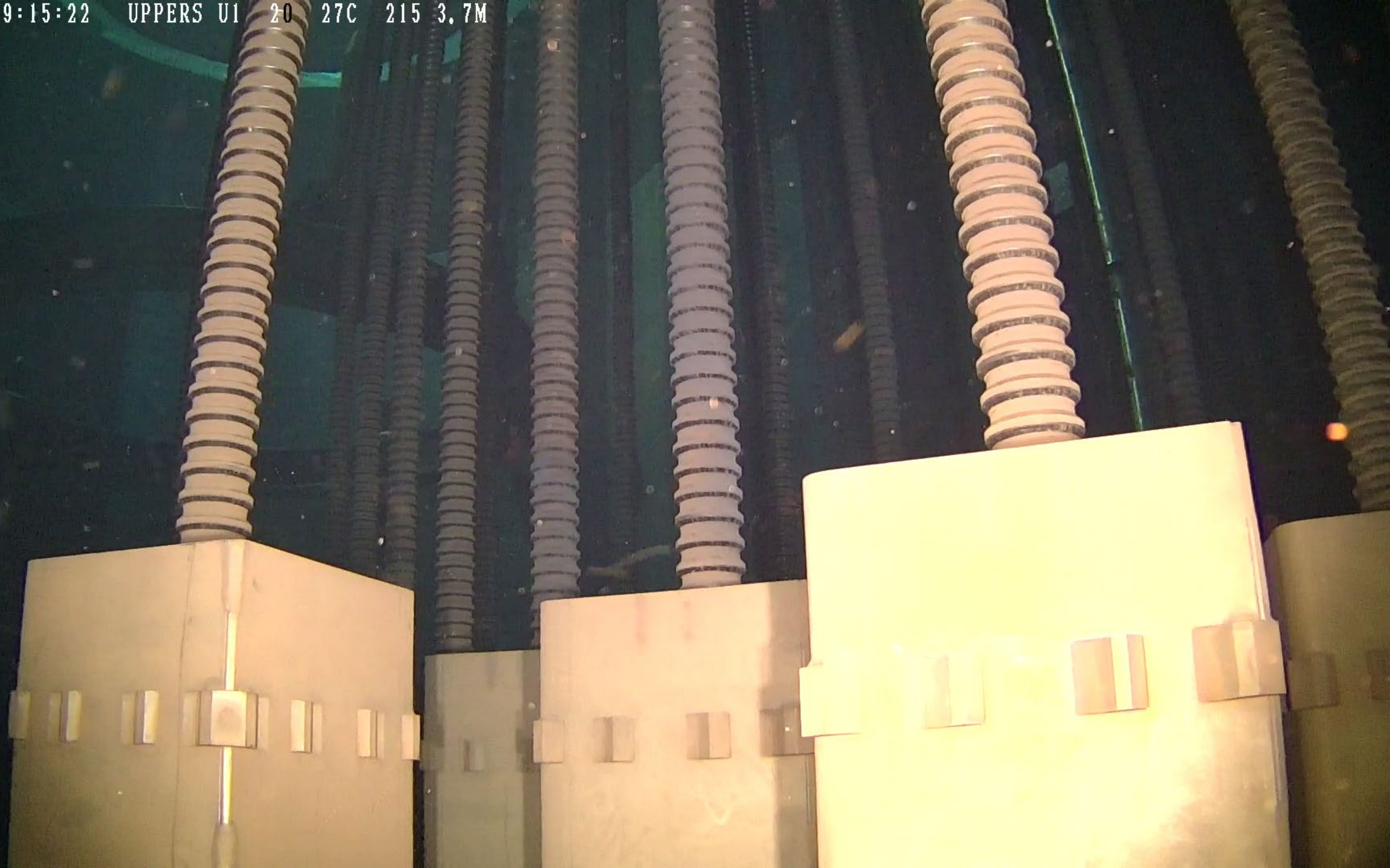




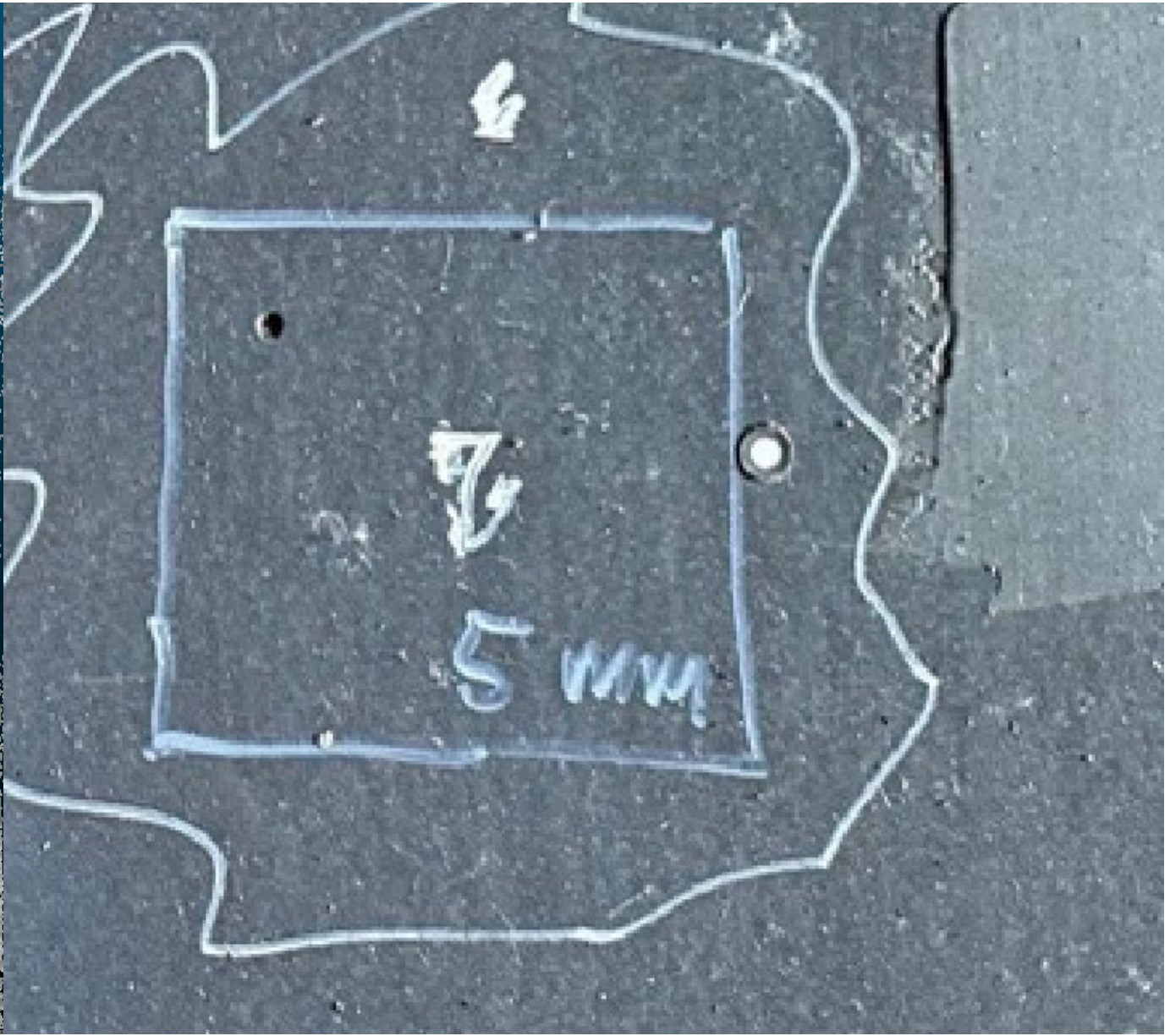
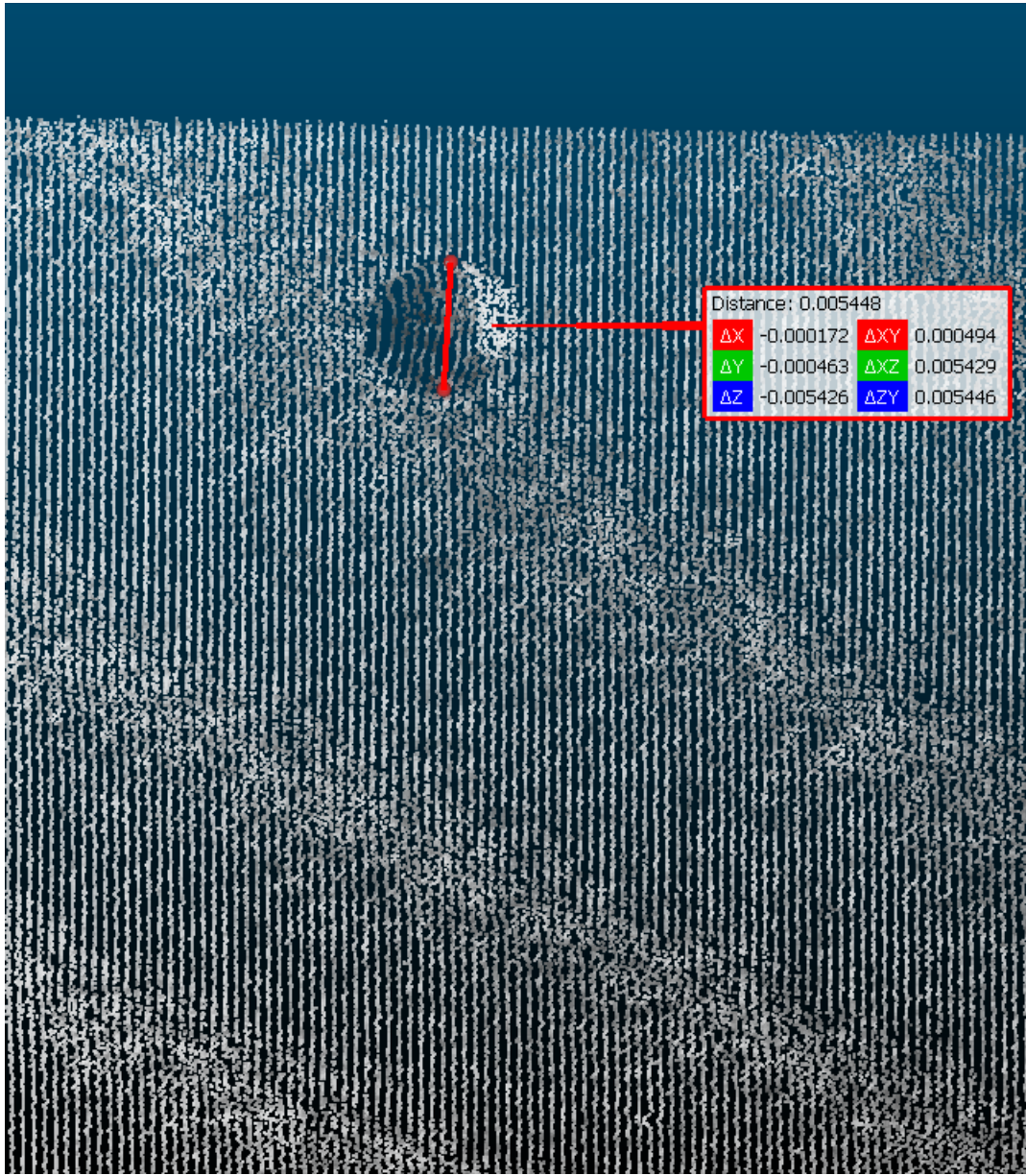


2020-05-17 09:15:22

UPPERS U1 20 27C 215 3.7M







UTILITY CRAWLER LINE-UP





RADWASTE FILTER FROM TRINUCLEAR

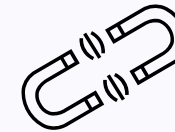
2019-09-18 12:08:38 DTJOB_-19__27C__183_1.4M



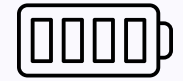
A-150 Confined Space Crawler



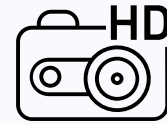
Fully submersible



Magnetically Coupled Drives



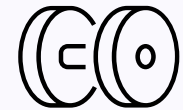
Battery Operated



High Definition Camera

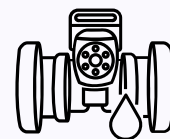


Direct Power Options

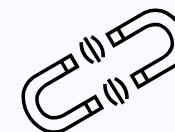


Durable

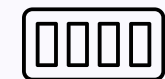
A-200 Pipe Crawler



Fully submersible



Magnetically Coupled
Drives



Battery Operated



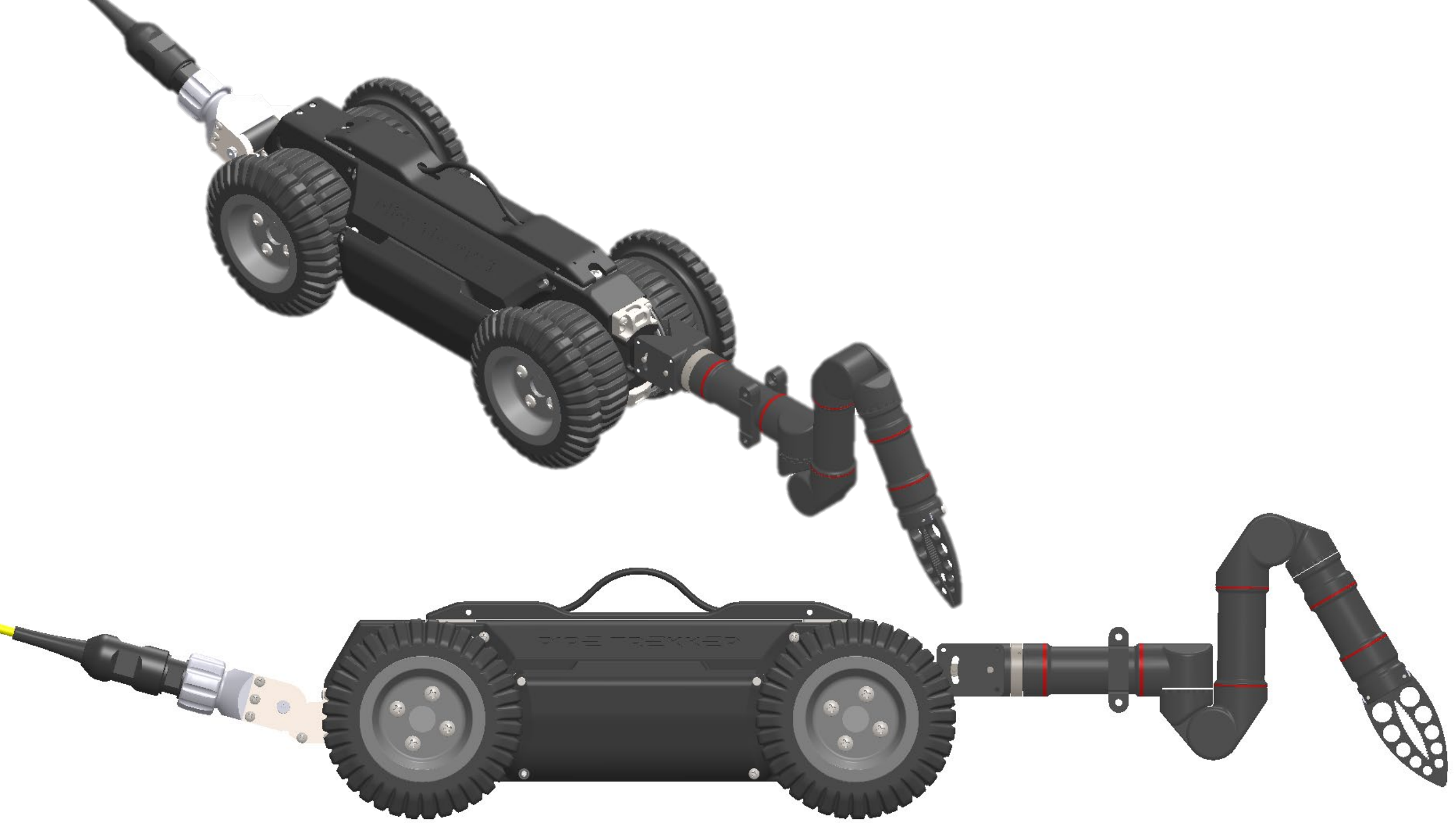
High Definition
Camera



Direct Power Options



Durable







Any questions?

Andrew Lawrence

Senior Account Manager

p | +1-519-504-6733

e | alawrence@deeptrekker.com