



November, 2015

ISOE INFORMATION SHEET

REPUBLIC OF KOREA SUMMARY OF NATIONAL DOSIMETRIC TRENDS

ISOE Asian Technical Center - Information Sheet No. 42 (2015)

Personnel Dose Management by KHNP

For the year 2014, 23 NPPs were in operation; 19 PWR units and 4 PHWR units. The trend on the number of units is shown in Figure 1. The average collective dose per unit for the year 2014 was 361.94 man-mSv/unit; 377.82 man-mSv/unit (PWR) and 286.50 man-mSv/unit (PHWR). The trend on the average collective dose per unit is shown in Figure 2. The dominant contributors of the collective dose in the year 2014 were the works carried out during the outages, resulting in 85.7 % of the total collective dose in 2014. There were 14,260 people involved in radiation works in 23 operating units and the total collective dose was 8,325 man-mSv (All Types); 7,179 man-mSv (PWR) and 1,146 man-mSv (PHWR). The trend on the total collective dose and number of workers are shown in Figure 3 and Figure 4, respectively.

The average annual individual dose in 2014 was 0.58 mSv/yr as shown in Figure 5. There was no worker whose radiation exposure exceeded the regulatory dose limit (100 mSv in 5 years and 50 mSv in any single year). Radiation dose which most of radiation workers (85.5 %) received was below 1 mSv.

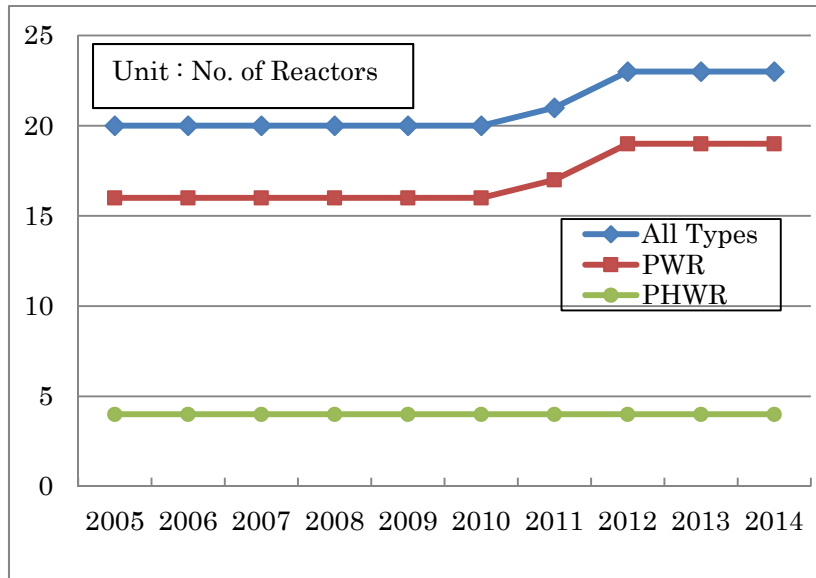


Figure 1. The number of reactors in operation

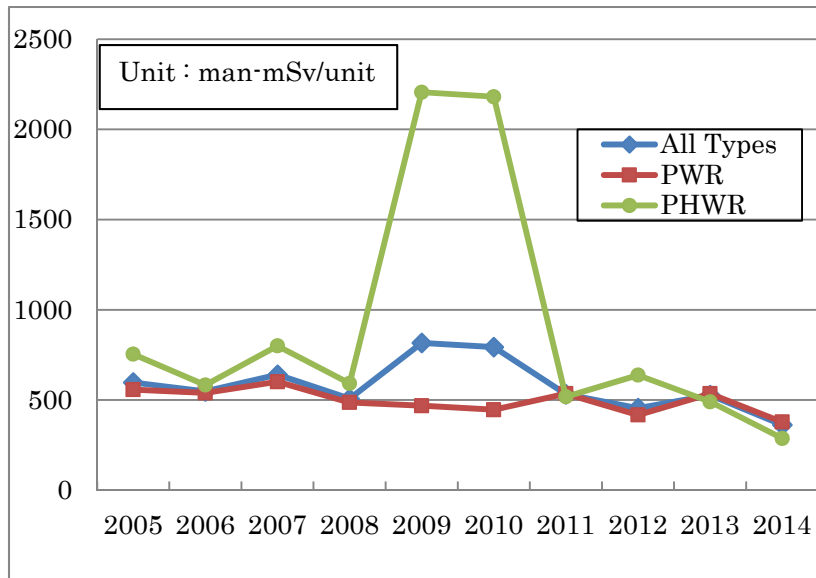


Figure 2. The average annual collective dose per unit

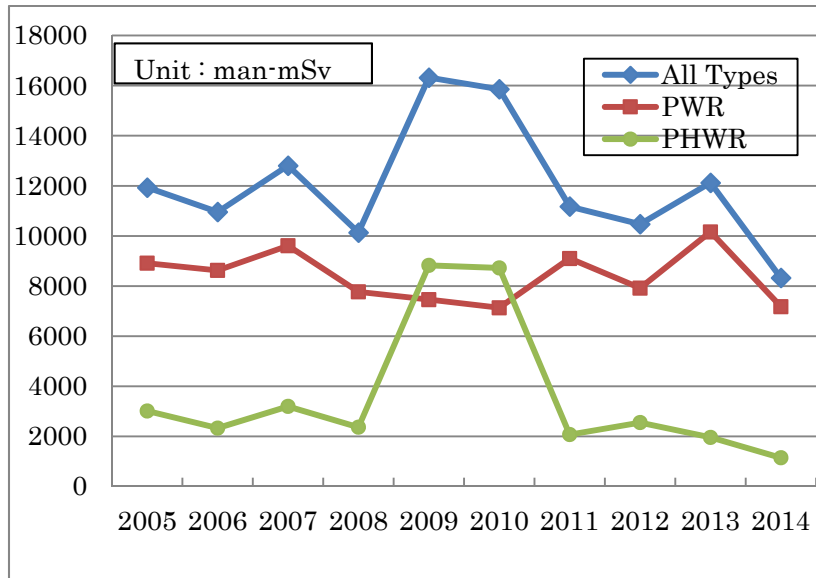


Figure 3. The total annual collective dose

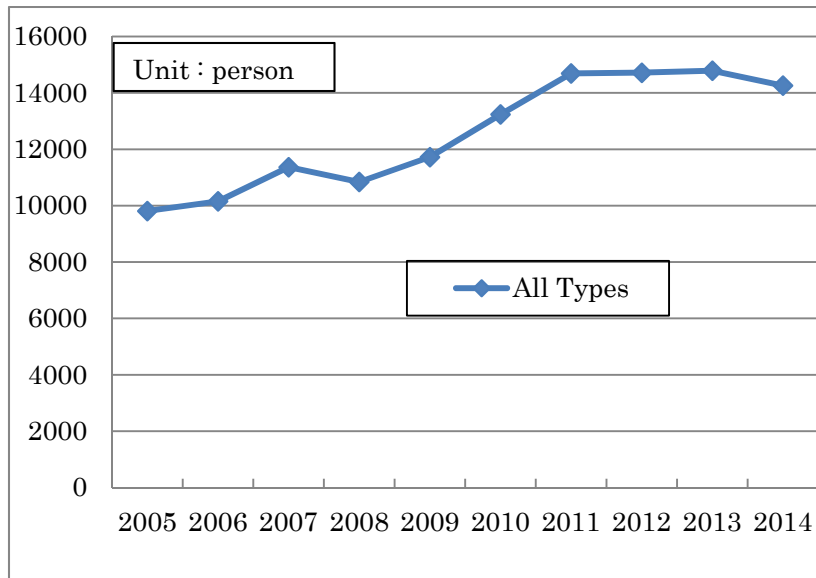


Figure 4. The number of radiation workers

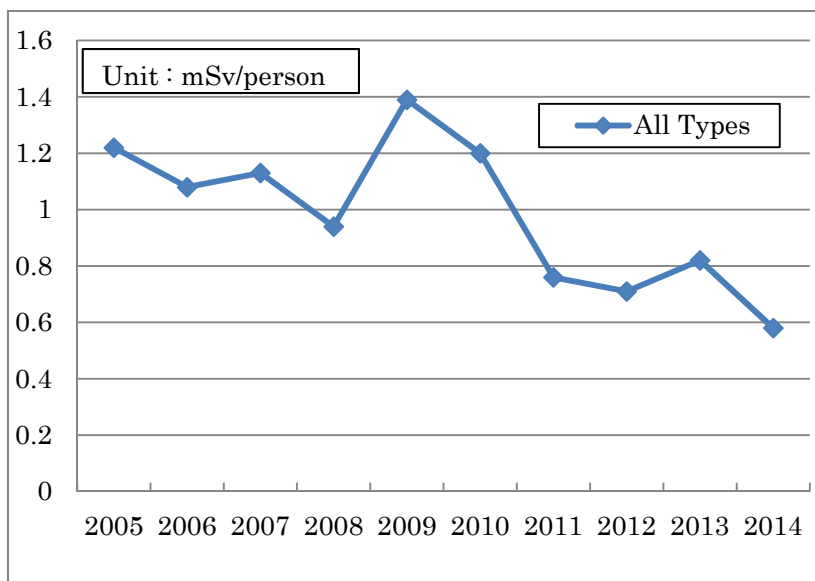


Figure 5. The average individual dose