



November, 2015

# ISOE INFORMATION SHEET

## JAPANESE DOSIMETRIC RESULTS: FY 2014 DATA AND TRENDS

### ISOE Asian Technical Center – NSRA Information Sheet No. 41

This ISOE information sheet presents the occupational exposure data for Fiscal Year (FY) 2014 and trends of commercial reactors in Japan from FY 1995 to FY 2014, which include PWRs, BWRs and a GCR\*.

\* GCR; Tokai NPP (ceased commercial operation in March 31, 1998)

**Table 1. Total collective dose in FY 2013 and FY 2014**

Reactor Type	Total Collective Dose (man.Sv)	
	FY 2013	FY 2014
PWRs	5.50	5.55
BWRs	82.44	109.21
Total (LWRs)	87.94	114.76

**Table 2. Average collective dose per reactor in FY 2013 and FY 2014**

Reactor Type	Average Collective Dose (man.Sv)	
	FY 2013	FY 2014
PWRs	0.23	0.23
BWRs	2.58	3.41
Total (LWRs)	1.57	2.01

Tables 1 and 2 show the total collective dose and the average collective dose per reactor for PWRs, BWRs and LWRs in FY 2013 and FY 2014.

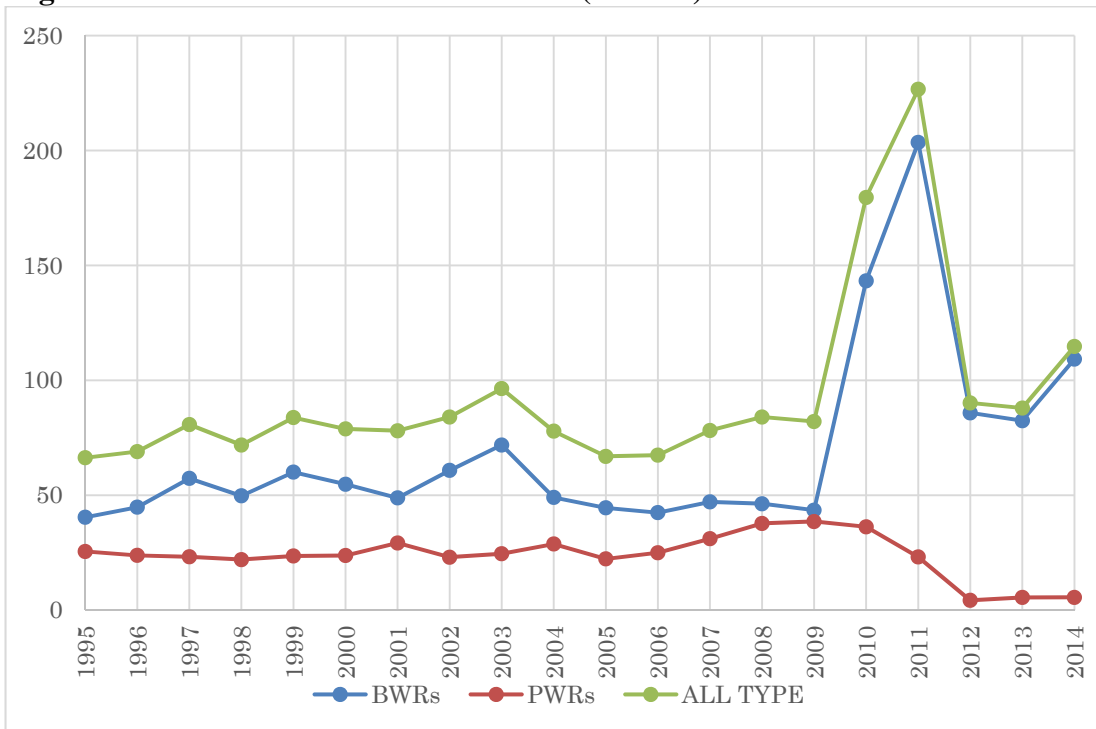
Some NPPs located in the east area of Japan were damaged by the huge earthquake and tsunami on March 11, 2011. Large dose for BWRs in FY 2011 was due to the accident of Fukushima Dai-ichi NPP. Only 2 PWRs operated in FY 2013, and no plant operated in FY 2014.

Figures 1 to 5 show the trends of the total collective dose and the average individual dose etc. from FY 1995 to FY 2014 in Japan.

Please note that these figures include 8 reactors which are in permanent shutdown. Two BWRs are in decommissioning since 2009, and 6 BWRs were permanently shut down in 2012 or 2014. Exposure data in figures 1 to 5 are based on “Status of Radioactive Waste Management and Occupational Radiation Exposure Management at Nuclear Facilities”.

<http://www.nsra.or.jp/isoe/english/regionalinfo/japan.html>

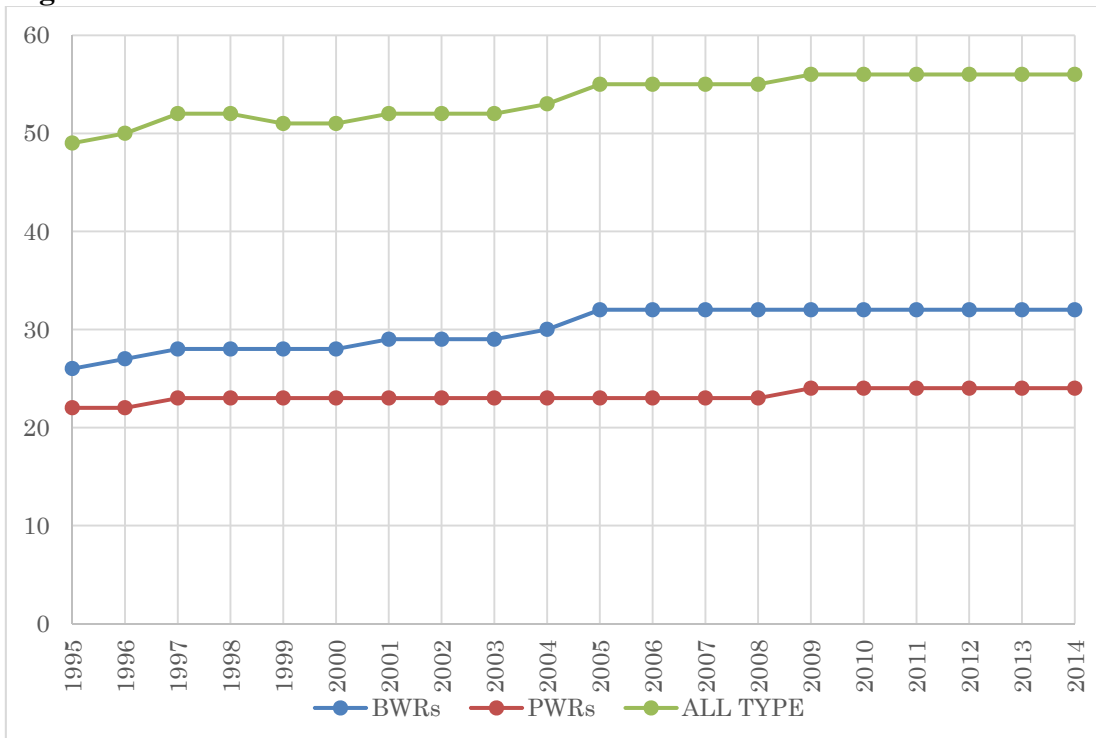
**Figure 1: TOTAL COLLECTIVE DOSE (man.Sv)**



\* GCR is included until FY1998.

\*\*BWRs include 8 reactors which are in permanent shutdown.

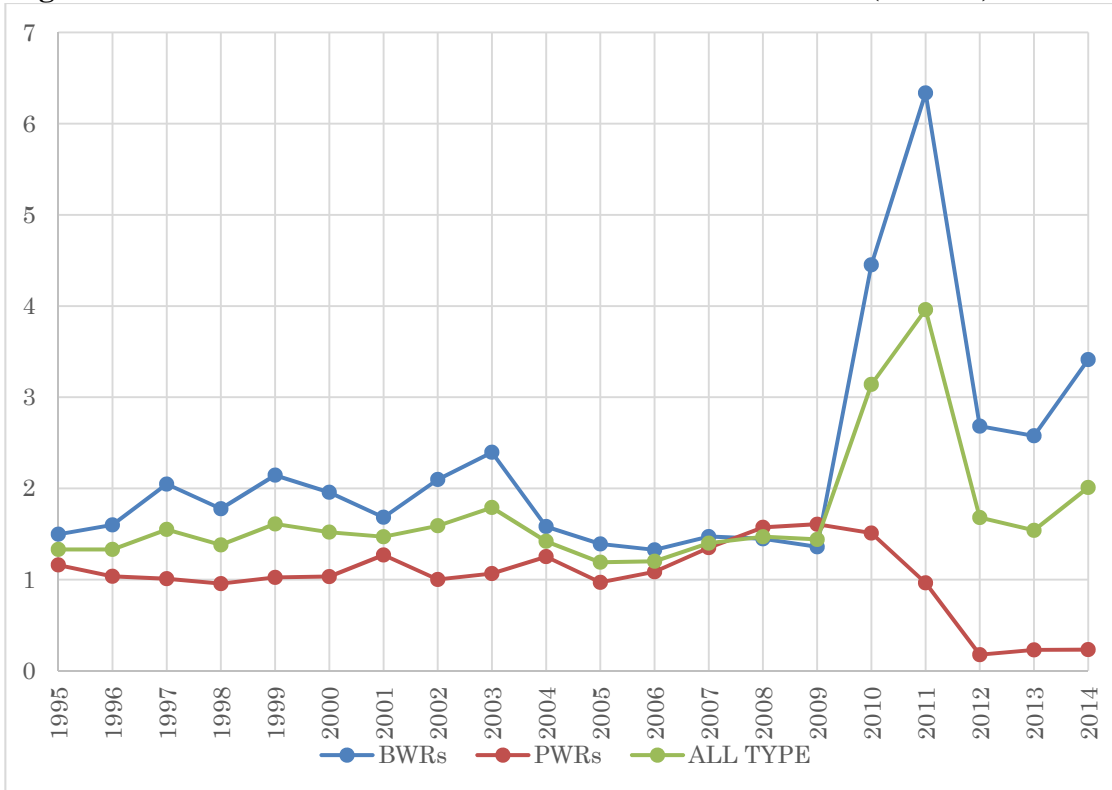
**Figure 2: NUMBER OF REACTOR IN JAPAN**



\* GCR is included until FY1998.

\*\*BWRs include 8 reactors which are in permanent shutdown.

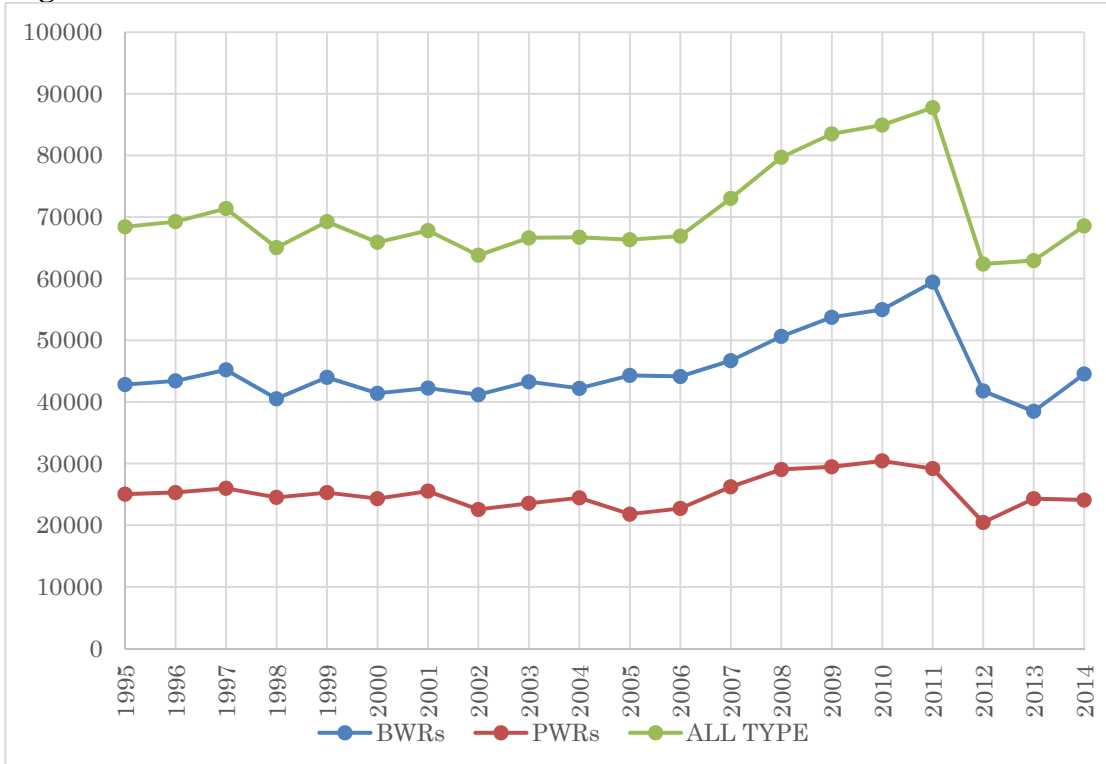
**Figure 3: AVERAGE COLLECTIVE DOSE PER REACTOR (man.Sv)**



\* GCR is included until FY1998.

\* \*BWRs include 8 reactors which are in permanent shutdown.

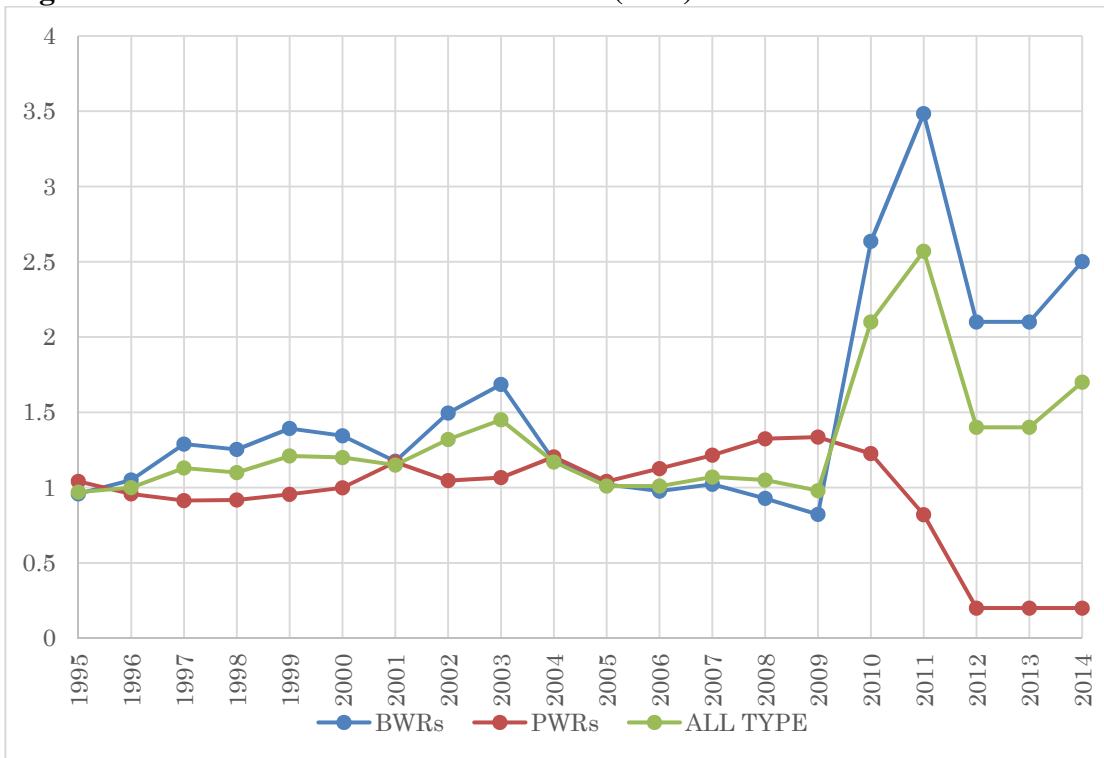
**Figure 4: NUMBER OF RADIATION WORKERS**



\* GCR is included until FY1998.

\* \*BWRs include 8 reactors which are in permanent shutdown.

**Figure 5: AVERAGE INDIVIDUAL DOSE (mSv)**



\* GCR is included until FY1998.

\*\*BWRs include 8 reactors which are in permanent shutdown.