



2006

ISOE INFORMATION SHEET

JAPANESE DOSIMETRIC RESULTS: FY 2005 DATA AND TRENDS

ISOE Asian Technical Center - JNES Information Sheet No. 29

This ISOE information sheet presents the Japanese occupational exposure results in FY 2005 and trends from FY 1986 to FY 2005 for commercial reactors in operation which include PWRs, BWRs and a GCR. *

Tables 1 and 2 give the total collective doses and the average collective doses per reactor for PWRs, BWRs and LWRs, respectively, ended in FY 2004 and FY 2005.

The FY 2005 has resulted in the decrease of the total collective dose for both of PWRs and BWRs.

The reduction of collective dose for FY 2005 was due to the decrease of modification works under high radiation dose rate and the decrease of the number and duration of periodical inspections compared to FY 2004.

Figures 1 to 6 show the trends from FY 1986 of the total collective dose, the average collective dose per generated electricity by reactor and the average individual dose etc. in Japan.

Table 1. Total collective dose in FY 2004 and FY 2005

Reactor Type	Total Collective Dose (man.Sv)	
	FY 2004	FY 2005
PWRs	28.78	22.30
BWRs	49.02	44.51
Total	77.81	66.91

Table 2. Average collective dose per reactor in FY 2004 and FY 2005

Reactor Type	Average Collective Dose (man.Sv)	
	FY 2004	FY 2005
PWRs	1.25	0.97
BWRs	1.58	1.39
Total	1.44	1.21

* GCR; The Tokai NPS, the sole GCR in Japan ceased commercial operation in March 31, 1998.

Figure 1

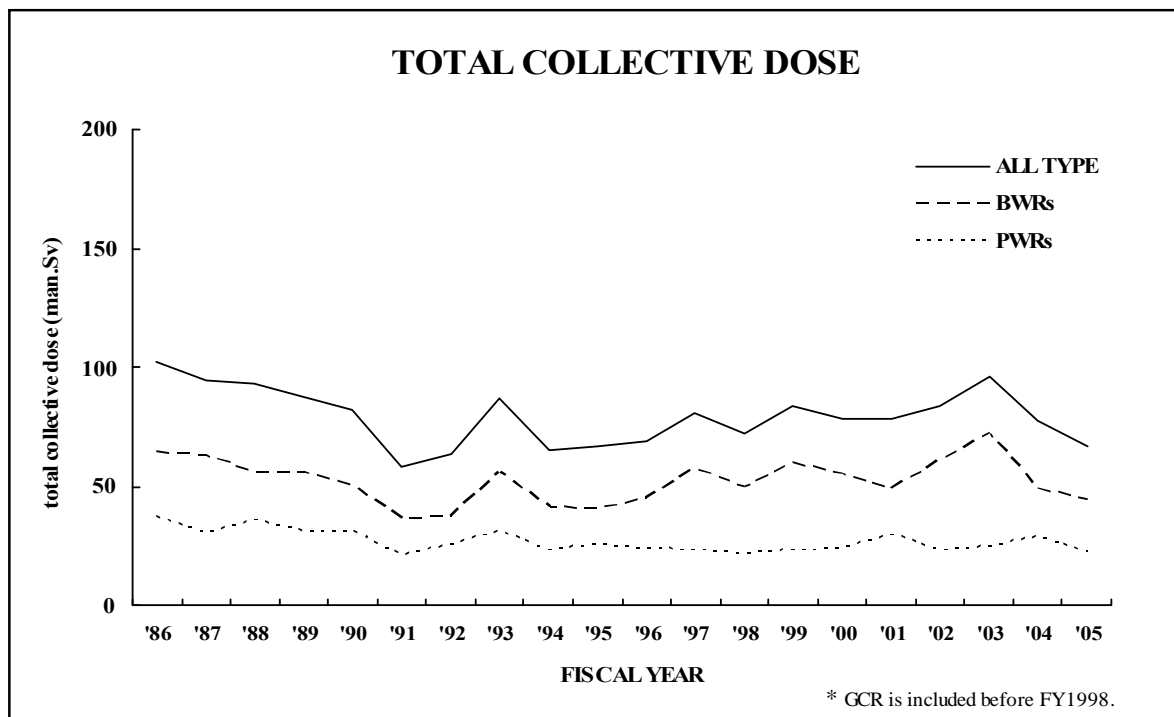


Figure 2

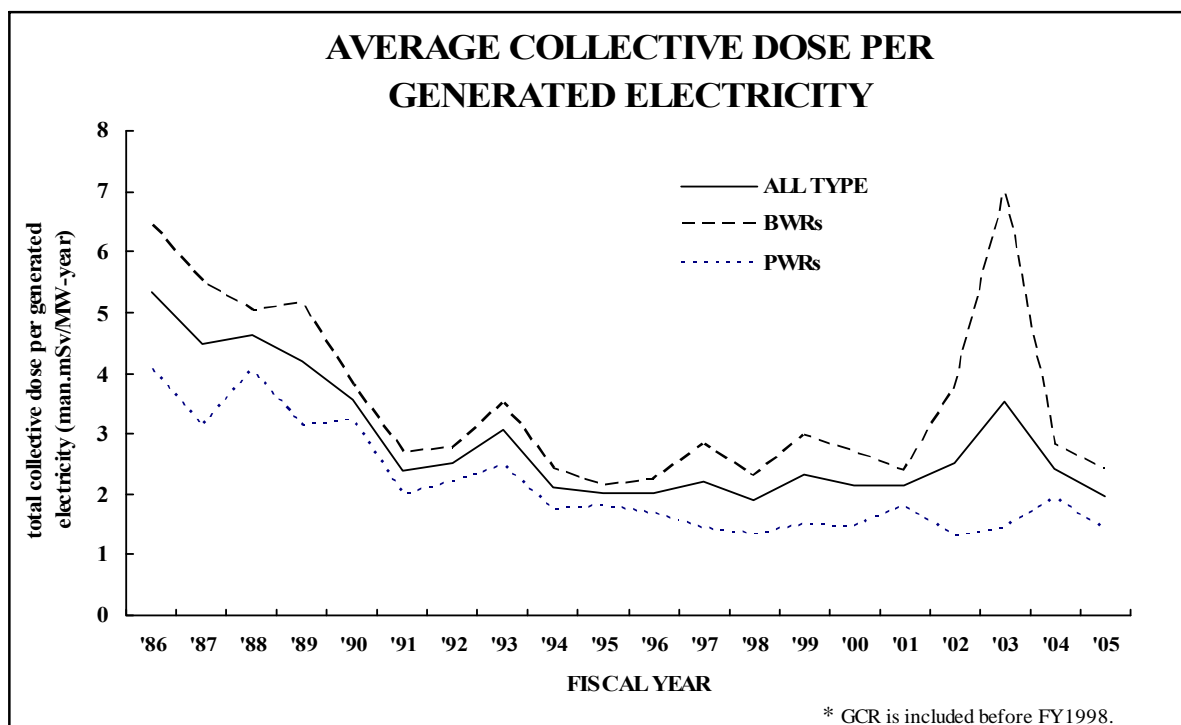


Figure 3

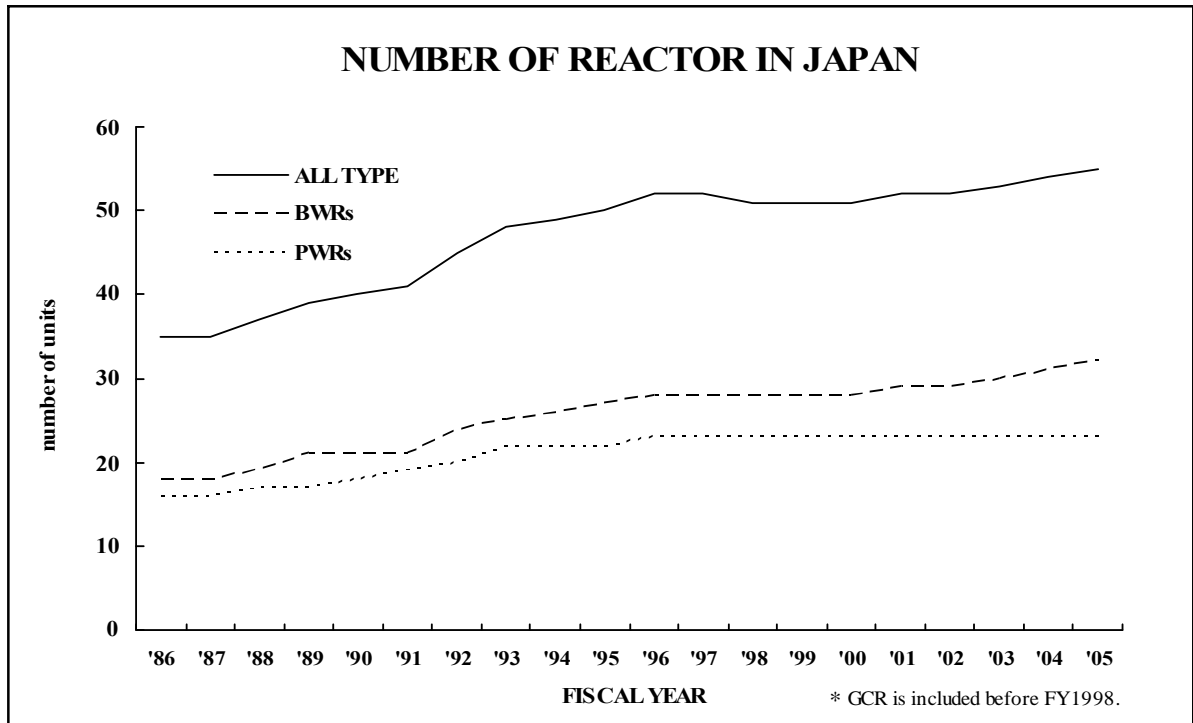


Figure 4

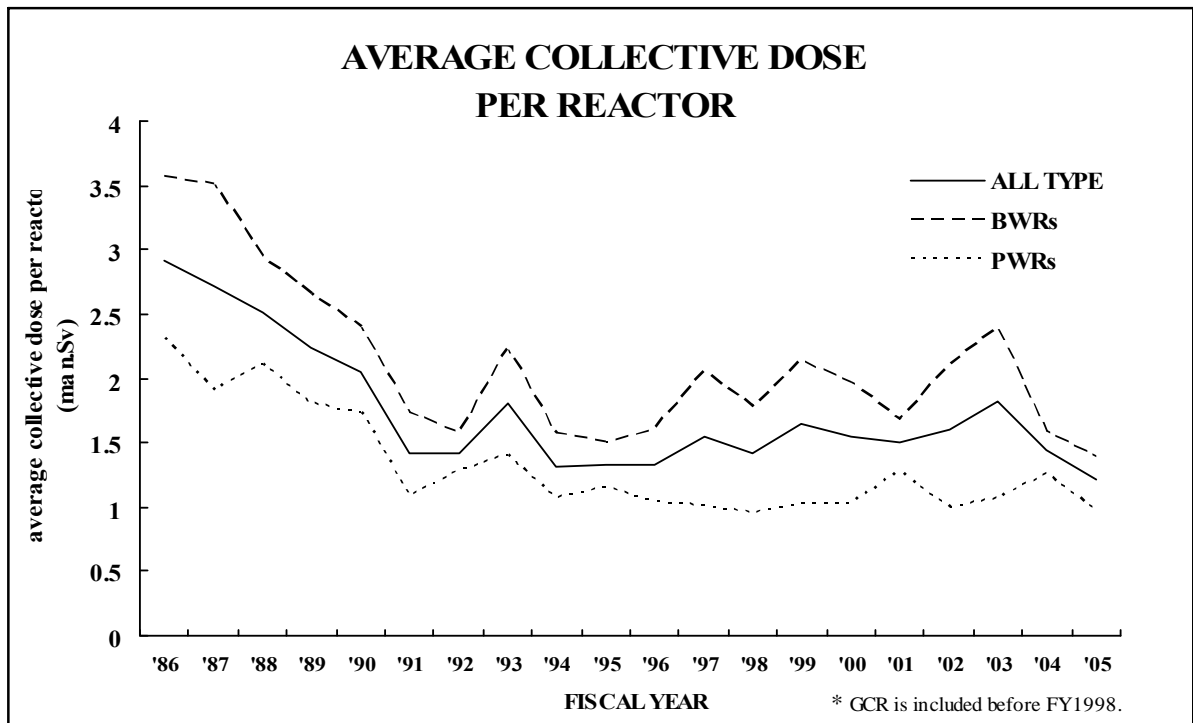


Figure 5

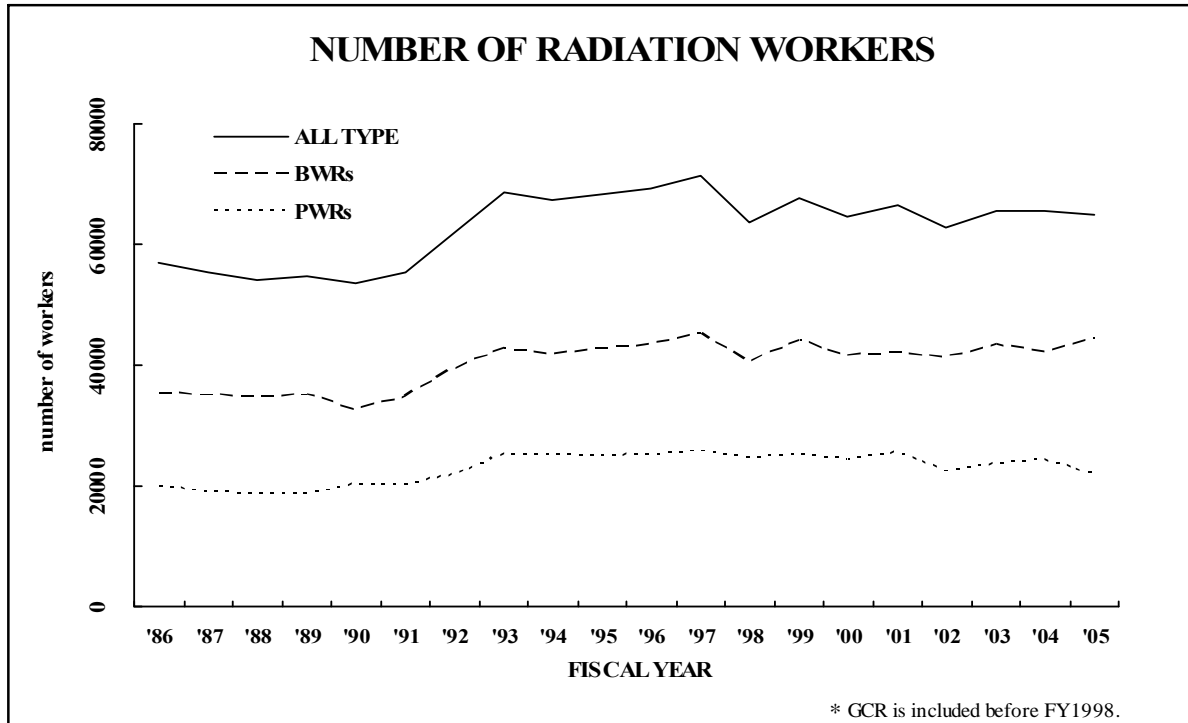


Figure 6

